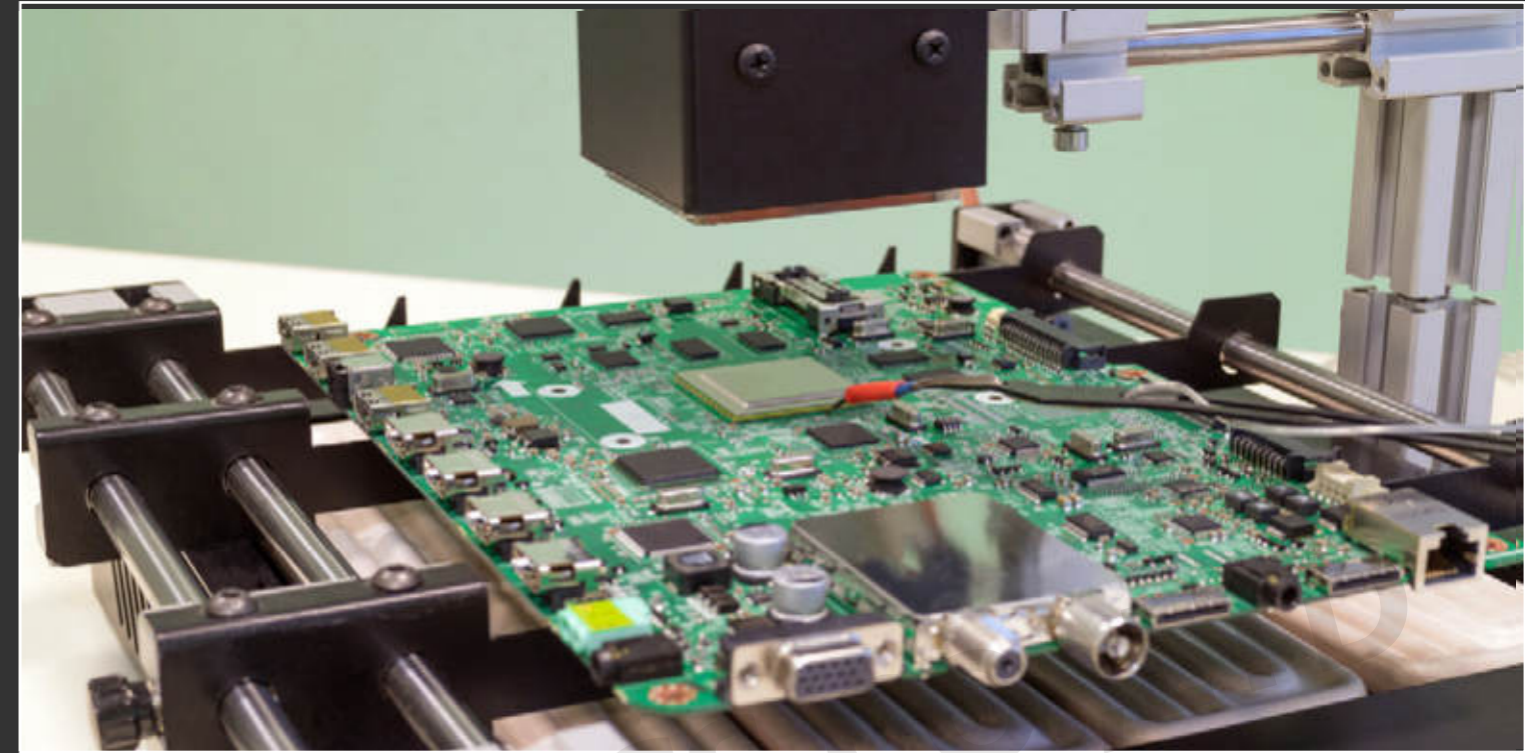




POE Manufacturing
Your Global Technology Partner



Office:

Room501-502, Fude life Insurance building, Fuzhong 1st Road, Lianhua street,
Futian district, SZ 518034

Factory:

Floor 3, Jinyuan Industrial Park, No.56 Tangtou Avenue, Shiyantown, Bao'an, SZ

- WEB1: www.poe-pcba.com
- WEB3: www.pcbamake.com
- WEB2: www.chinapcsmt.com

■ E-mail: sales@poe-pcba.com
orders@pcbamake.com
sales@chinapcsmt.com

■ TEL: 0755-25312250

WISDOM LEADS GLOBAL
ELECTRONIC CORE TECHNOLOGY

智领全球
电子核心
科技

May- June

OEM Services for PCB and PCBAs Since 1996

GENERAL MANAGER SPEECH

Business is about building life-long relationships
with attentive service, quality products and honest
business practices.

Mr.Hu Jiwei

CATALOG

- 01 Company Profile
- 02 Factory Equipment
- 03 PCB Case
- 04 New Products
- 05 Supplier Meeting
- 06 POE Culture



POE as a PCB PCBA company has developed to a well-known Turn-Key PCB assembly company over the years, providing high and low volume batches at reasonable prices and high quality, from making the boards to shipping the final product and everything in between.

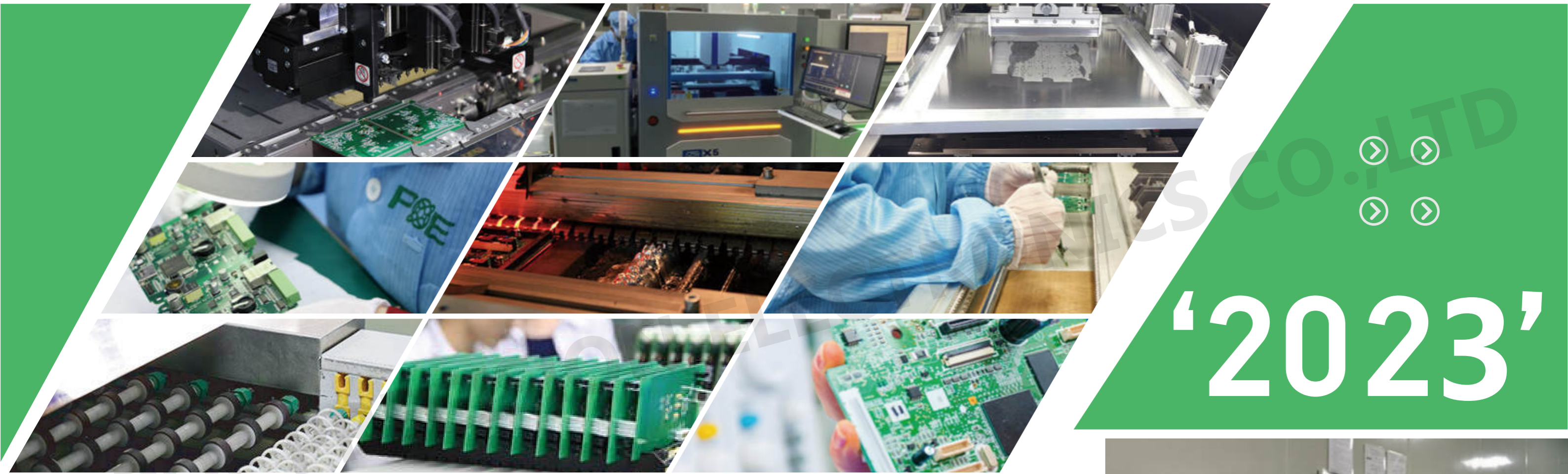
With imported fully automatic production machines & professional sales team, purchasing team and engineering team located in Shenzhen China, HK, USA and Canada, POE is able to provide customers with low-cost one-stop contract manufacturing service, including PCB fabrication, components procurement, PCB assembly, programming, cable assembly, final PCBA testing, final case assembly, coating, worldwide shipping.

POE customers are primarily from the USA, Canada, Europe, Australia, Israel, Middle East, Brazil, Argentina, Asia..., and in a wide variety of industries like Medical, Telecommunications, Airplane recorder, Automobile, Database information, 5G, IoT, Robot, Industrial, Home appliance, Consumer Electronics, LED products.



COMPANY PROFILE





POZ... LTD
‘2023’

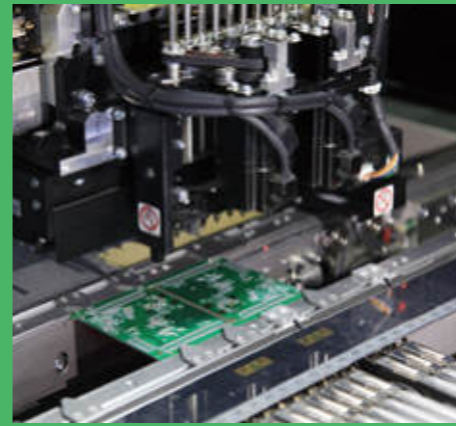
ISO9001:2015/UL94V-0/
ISO13485:2016/IPCIII/
IPC II /ROHS/REACH





FACTORY EQUIPMENT

PCBA EQUIPMENT SHOW



Pick & Place Machine



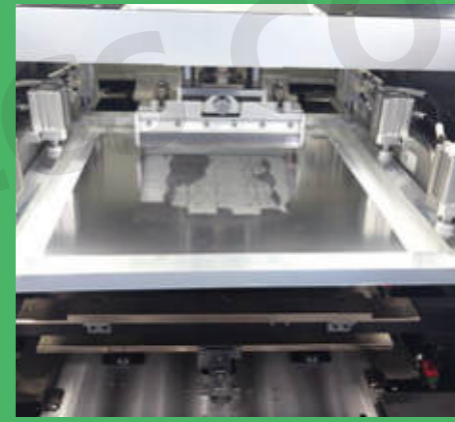
Pick & Place Machine



Manual Visual QC



Automatic Solder Paste



Automatic Solder Paste



AOI



Wave Soldering



Reflow Oven



Pick & Place Machine



Reflow Soldering



Automatic Printing Machine



Plate Washer



Drilling Machine



PTH



CNC Molding



Drilling Workshop



Internal Lamination



Dust-free Development



Figure Electricity



Graphics Transfer



Sink Copper

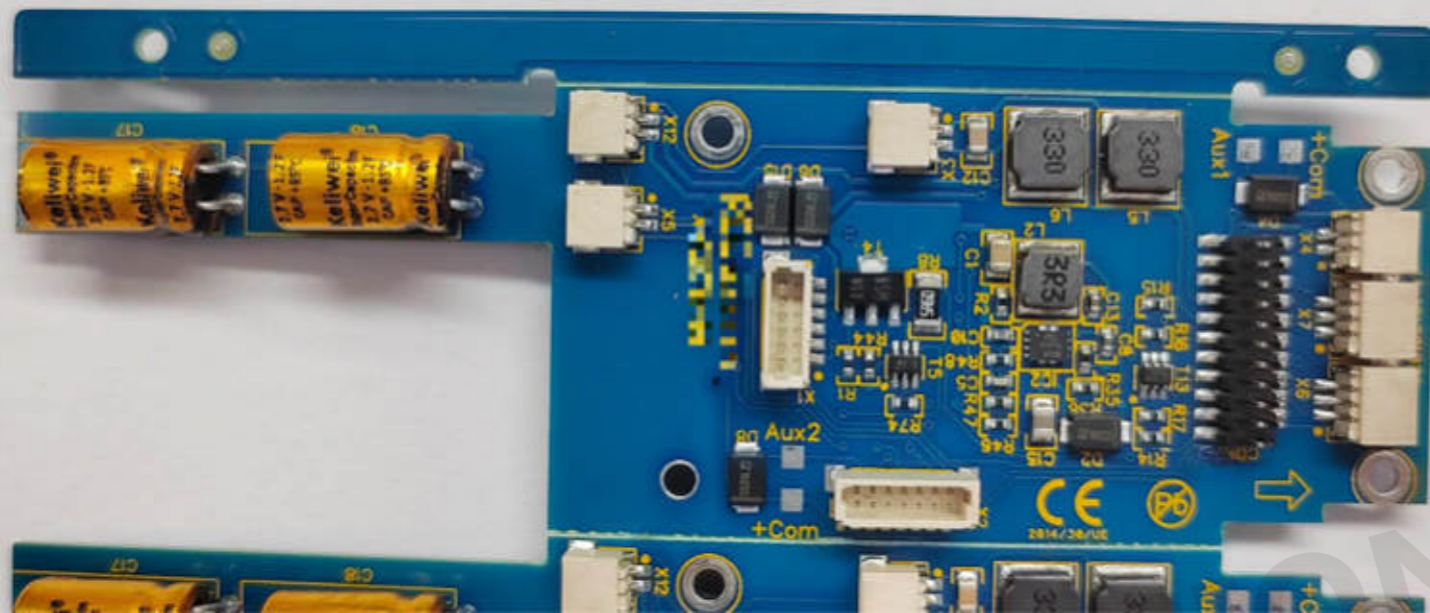
PCB EQUIPMENTS SHOW

POE continually reinvests in the very latest technology and equipment based on customer demands and industry trends.

POE ELECTRONICS CO., LTD

CASE ONE

PCB CASE

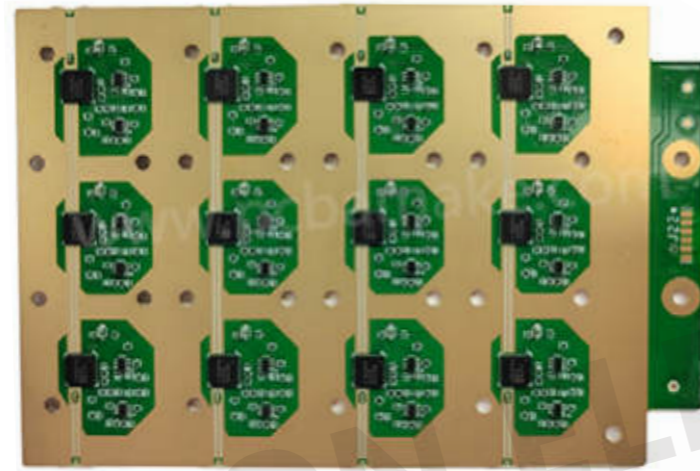


6Layer PCB Material: FR4 TG 150
Finish Treatment: ENIG
Copper Thickness: 10Z
Board Thickness: 1.6MM
Solder Mask: Blue



Video Game Car

CASE TWO



4Layer PCB Material: FR4+RO4003
Finish Treatment: Immersion Gold
Copper Thickness: 1.5OZ
Board Thickness: 0.8MM
Solder Mask: Green



RF Testing Equipment

CASE THREE

1. Broadcast Infrastructure
2. Intercom and Paging Systems
3. Media Business Management solutions

8Layer PCB

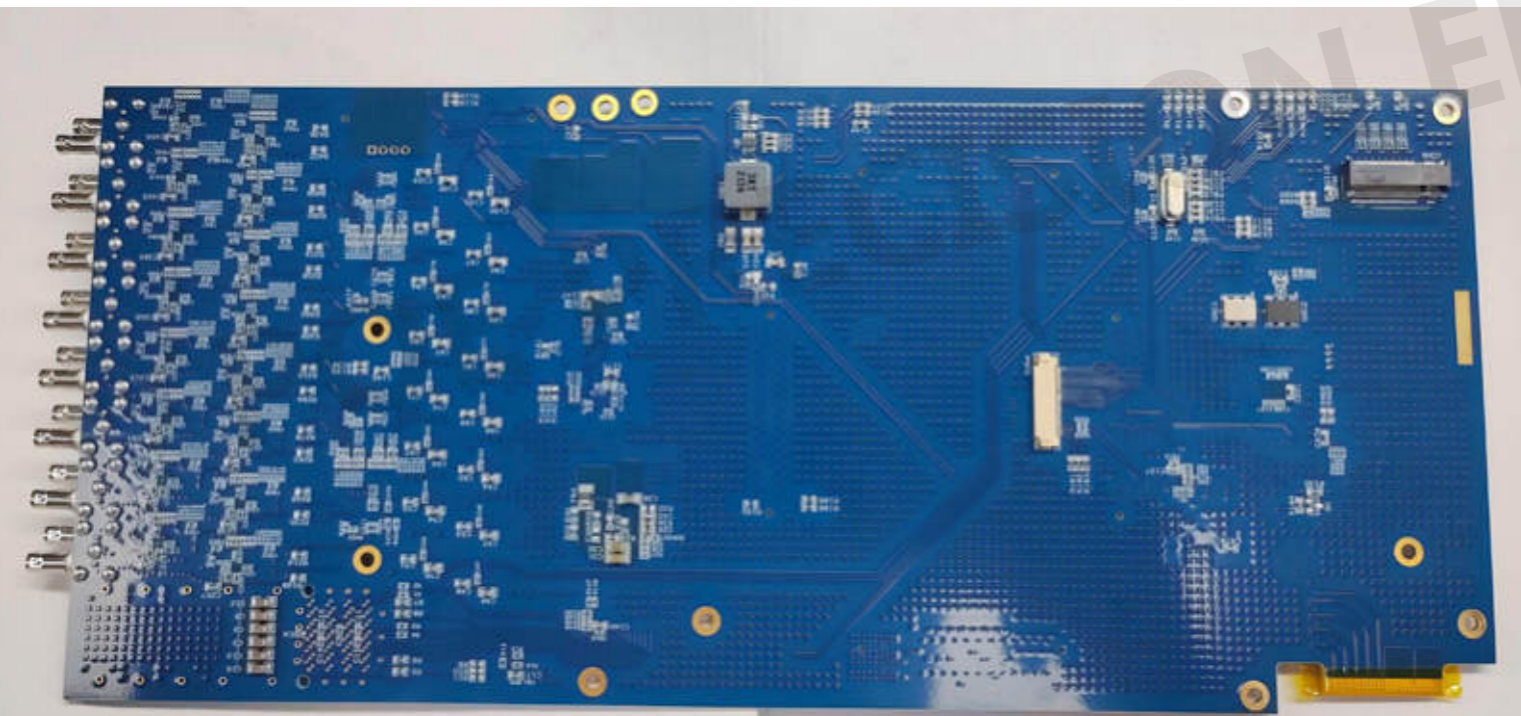
Material: MEGTRON6

Finish Treatment: ENIG+Gold Finger

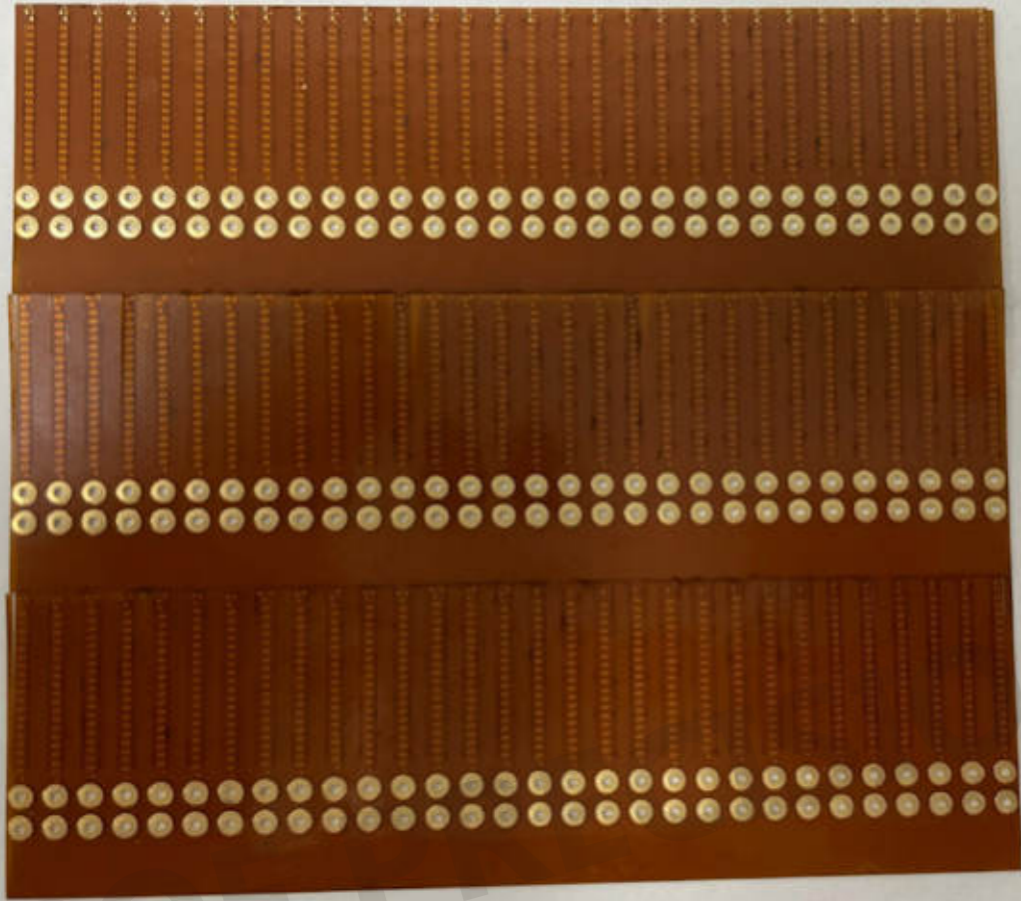
Copper Thickness: 10Z

Board Thickness: 1.6MM

Impedance Control



CASE FOUR



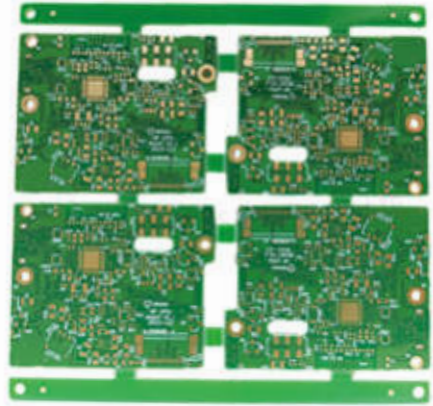
4Layer Flexible PCB
Material: Immersion Gold
Finish Treatment: Blind and Buried Vias
Board Thickness: 0.2MM



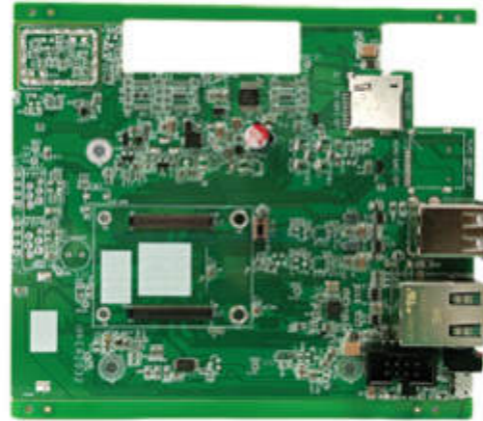
NEW PRODUCT

For more than 20 years, we have won praises from customers all over the world with our professional product technology and high-quality service. POE has been dedicated to manufacturing and supplying of high quality printed circuit boards which are widely used in many industries such as automotive, communication, medical equipment, industrial, aerospace, power and instrumental industries, LED products, consumer electronics and so on.

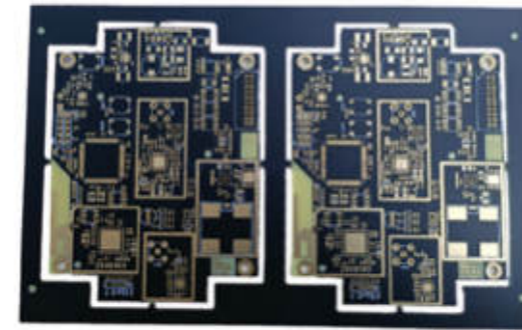
POE



POE



POE



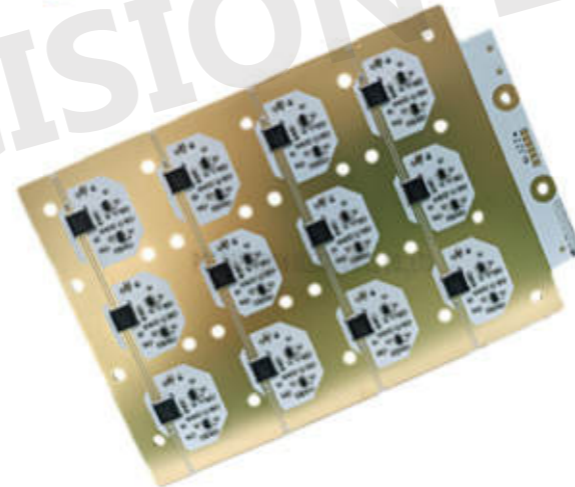
POE



POE



POE



POE



POE



4 Layer PCB

Material: FR4 TG 150

Finish Treatment: HASL

Copper Thickness: 10Z

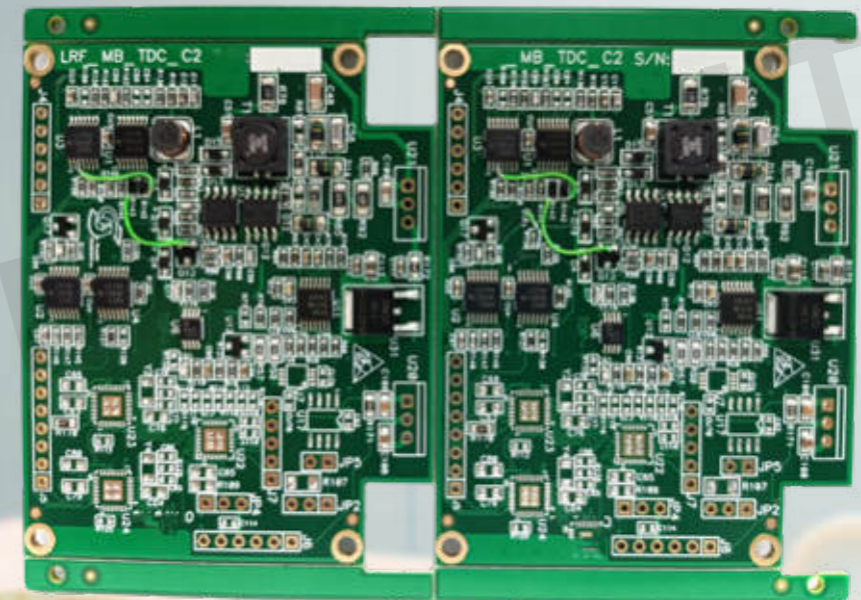
Board Thickness: 1.6MM

Solder Mask: Green

Silkscreen: White



6 Layer PCB
Material: FR4
FinishTreatment: Lead Free HASL
Copper Thickness: 10Z
Board Thickness: 1.6MM
Solder Mask: Green
Silkscreen: White



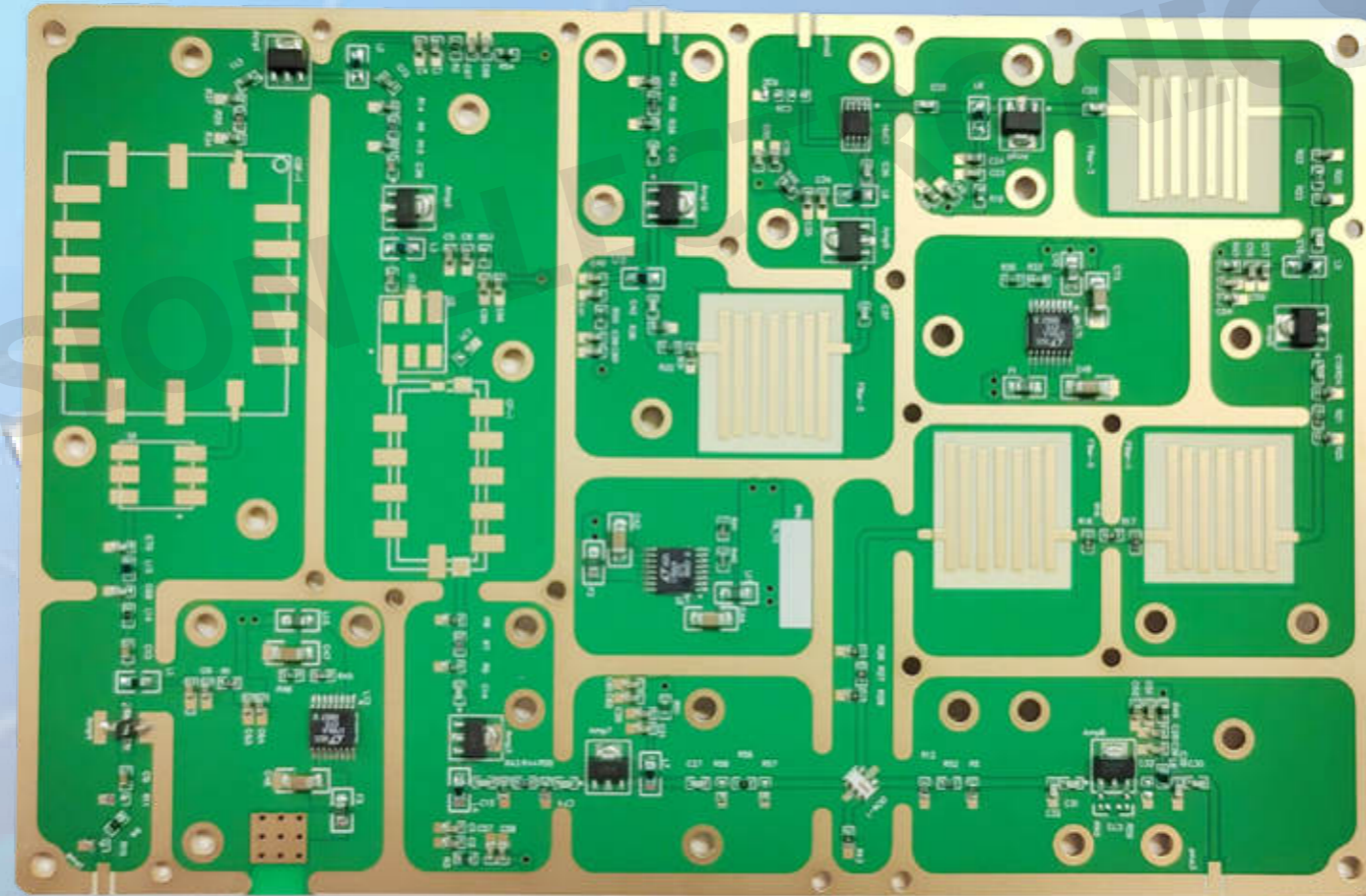
4 Layer PCB

Material: Rogers 4350B

Finish Treatment: ENIG

Copper Thickness: 10Z

Board Thickness: 0.6MM



RECIS ELECTRONICS CO.,LTD



4 Layer PCB
Material: FR4
Finish Treatment: ENIG
Copper Thickness: 10Z
Board Thickness: 1.6MM



PRECISION ELECTRONICS CO., LTD



8 Layer PCB

Material: FR4

Finish Treatment: ENIG

Copper Thickness: 10Z

Board Thickness: 1.6MM

ATOMIC ELECTRONICS CO., LTD

Supplier Meeting

10+ YEARS OF EXPERIENCE IN THE SOURCING TEAM

Supplier development and management is the core of the whole procurement system. In order to strive for better component prices and reduce customer project budget, POE's sourcing team is continuously looking for high-quality suppliers, we evaluate and examine the comprehensive capabilities of suppliers based on the principles of quality, cost, delivery and service, It improves our supply database, and ultimately forming POE's mature supply chain system.

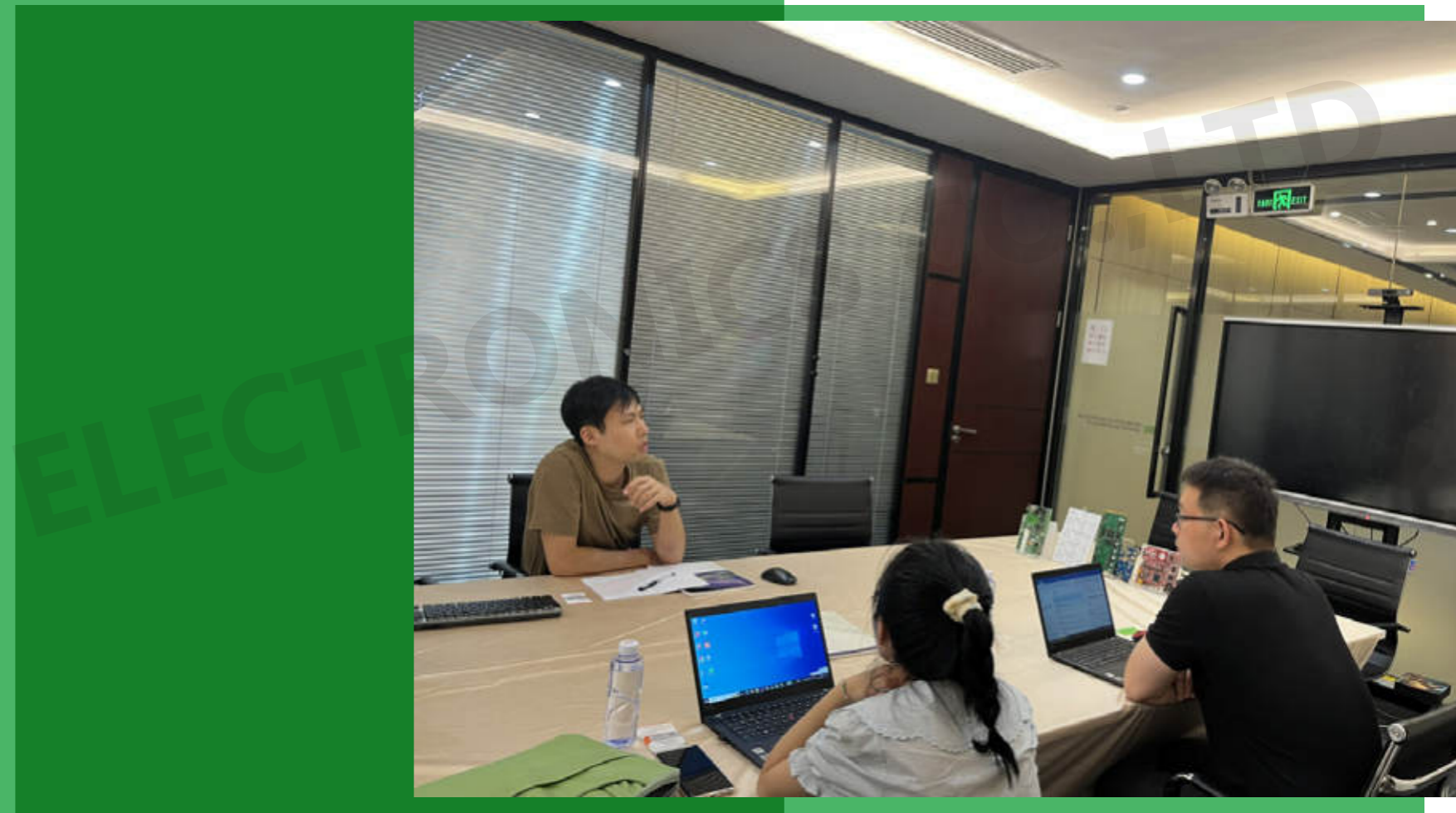


POE has a mature procurement chain system, with more than 400 high-quality cooperative suppliers and over 1.2 million inventory data, original and genuine parts, providing one-stop sourcing services for well-known brands of electronic components worldwide, such as all NXP, ST, TI, Infineon, ADI, etc.

POE chooses every supplier strictly from cooperation, assessment and long-term cooperation, to assure the quality and be responsible for customers' projects. POE supply chain can essentially solve the problem of shortage of electronic components, and ensure timely delivery to achieve rapid response to customer projects.

Based on real-time data and early signals of component market, POE procurement department consciously anticipates the potential risks of supply chain, and speculates the potential risks of component shortages through the data collected and the report. For example, POE team forecasts which orders are more likely to face delivery issues and price fluctuations, and recommend customers to prepare for the projects in advance.

With information obtained from real-time supply chain, POE is able to help customer to minimize the affect of shortages at early stage. That means, if any shortage of components, POE will recommend alternative sourcing channels and replacement with other optimal parts immediately.



POE Culture

POE Organized Activity

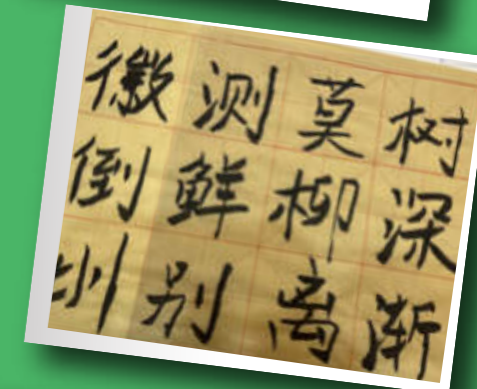
Having a relax during the busy daily work, POE organized a lychee picking event at Xili Fruit Farm in Nanshan. There are many varieties of litchi planted here, such as Feizixiao, Guiwei, Lo mai chi, etc.

POE prepared a box of lychees for each employee to take home and share with the families. Through this event, everyone not only tasted fresh and delicious lychees, but also enhanced the relationship and team spirit between colleagues.



POE held a "Calligraphy Learning" event on May 13th.

Calligraphy is one of the treasures of Chinese culture, with profound historical and cultural heritage and inherent aesthetic value. The theme of this POE event is "Calligraphy Exchange Conference", aiming to promote the essence of Chinese culture through the dissemination and promotion of calligraphy art, improving the cultural literacy and aesthetic level of employees, and injecting new vitality and connotation into the company's cultural construction.



Happy Dragon Boat Festival

As one of the four traditional festivals in China, the Dragon Boat Festival aims at worshipping the dragon ancestors, praying for good fortune and warding off evil spirits. It has folk customs such as eating Zongzi and rowing dragon boats, and sends condolences to the great patriotic poet Qu Yuan. POE also prepared Zongzi for all the employees.



Dragon boat group building is a mass entertainment activity with rich cultural and cultural connotations. At the same time, it is also a sports activity that is conducive to enhancing one's physical fitness and cultivating the spirit of courage and determination.

Through this activity, individuals were better integrated into the collective and cohesion was enhanced. Improved organizational discipline awareness and enhanced collective sense of honor. Enhanced goal recognition and boosted team morale.

Happy Birthday! POE Grows Together with You!

POE monthly birthday party coming again.

Through this activity, employees' sense of belonging and identification with the company has been greatly enhanced, thereby maintaining a better work attitude and growing and developing together with the company.

