



POE PRECISION ELECTRONICS

Office:

Room501-502, Fude life Insurance building, Fuzhong 1st Road, Lianhua street, Futian district,SZ 518034

Factory:

Floor 3, Jinyuan Industrial Park, No.56 Tangtou Avenue, Shiyantown, Bao an,SZ

POE科技·让世界更亲近

POE Manufacturing , Your Global Technology Partner

POE PRECISION ELECTRONICS CO.,LTD/WANFENG CIRCUIT CO.,LTD

■ WEB1: www.poe-pcba.com
■ WEB3: www.pcbamake.com

■ WEB2: www.chinapcsmt.com
■ E-mail: Sales@poe-pcba.com

■ TEL: 0755-25312250
Orders@pcbamake.com Sales@chinapcsmt.com

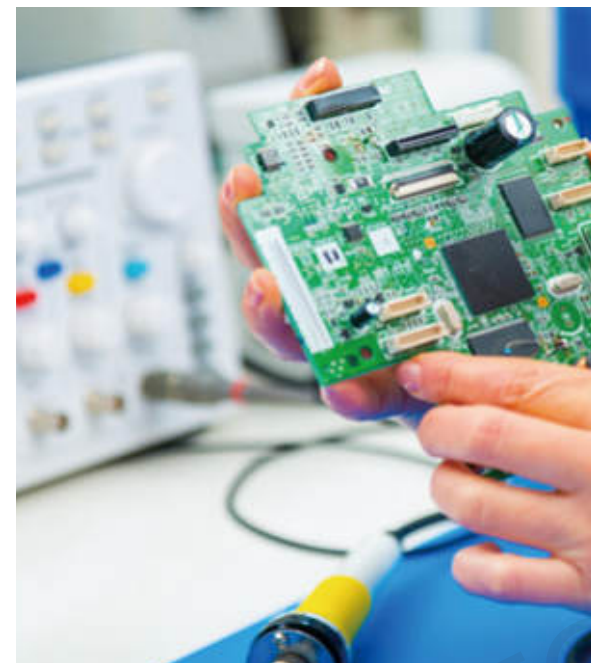
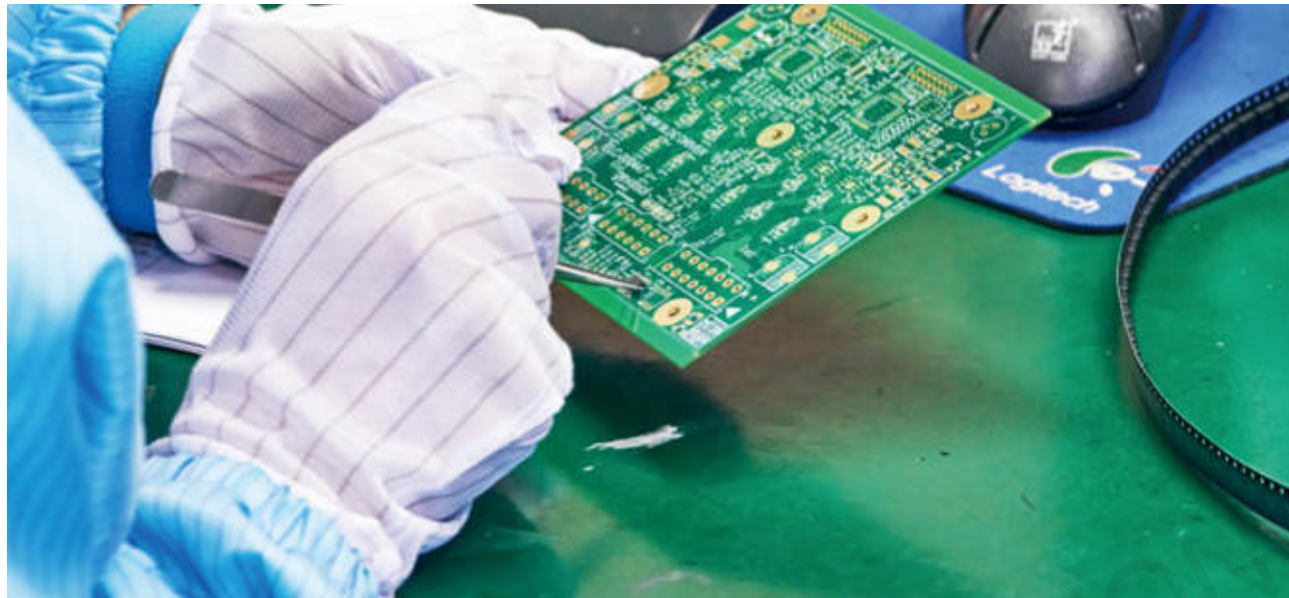
智领全球 电子核心 科技

WISDOM LEADS GLOBAL
ELECTRONIC CORE TECHNOLOGY



CONTENT

- 01
 - Company Profile
- 02
 - POE Culture
- 03
 - July-August PCBs Products
- 04
 - July-August PCBAs Products
- 05
 - Quality Control



Company Profile

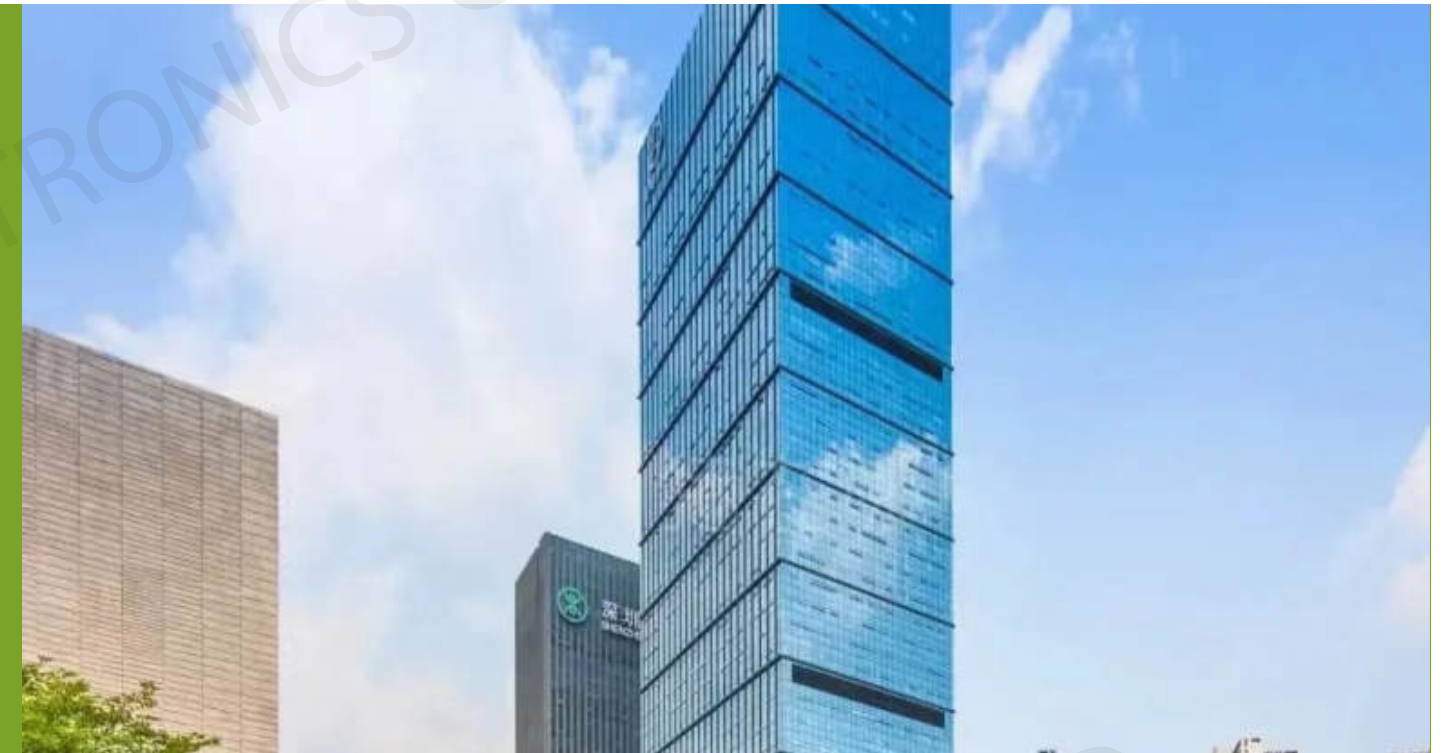
POE as a PCB company and has developed to a well-known Turn-Key PCB assembly company over the years, providing high and low volume batches at reasonable prices and high quality, from making the boards to shipping the final product and everything in between.

With imported State-of-the-Art fully automatic production machines & professional sales team, purchasing team and engineering team located in Shenzhen China, HK, USA and Canada, POE is able to provide customers with low-cost one-stop contract manufacturing service, including PCB fabrication, components procurement, PCB assembly, programming, cable assembly, final PCBA testing, final case assembly, coating, worldwide shipping.

POE customers are primarily from the USA, Canada, Europe, Australia, Israel, Middle East, Brazil, Argentina, Russia, Ukraine, Asia..., and in a wide variety of industries like Medical, Telecommunications, Airplane recorder, Automobile, Database information, 5G, IoT, Robot, Industrial, Home appliance, Consumer Electronics, LED products.

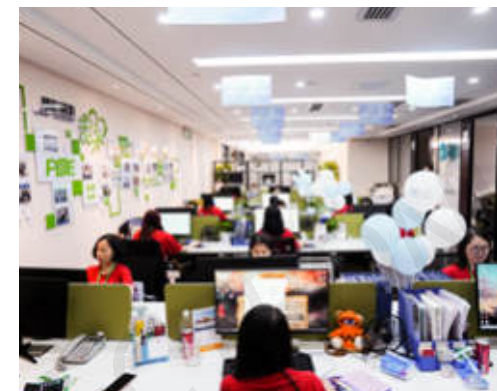
POE Culture

"Office is not just a physical property, but the wellbeing of employees and the whole company."
POE is located in the heart of financial and trade district in Shenzhen China, with a superior office environment - good layout, harmonious colour scheme, environmentally friendly materials...



July events

Moving to the New Office



The open office space breaks the traditional compartmentalisation, with public seminar and meeting areas, and breakout areas to facilitate full communication and exchange between staff. The simple but unpretentious decoration style, light and airy office, fully covered cooling and heating equipment, fully surrounded by green plants..... A comfortable office environment is created for the staff and the company.



The cultural wall writes POE's guidelines and witnesses POE's honor. New era, new journey, POE will continue to strive with the mission.

Awards

An exceptional and passionate team, working with wisdom and strength to achieve success, working together to serve our customers around the world and to achieve our goals.

POE has a perfect institutional system and a humanistic reward mechanism. The employees work hard, create successes, keep innovating and embrace challenges, and use their hard work to achieve fruitful results.



August events

Birthday Parties

POE places great emphasis on the personal and emotional care of the staff group and holds regular birthday parties every month. Between the confetti, balloons, and cake, office birthday parties offer employees a brief respite from their day-to-day, we enjoy tasty food and the blessings of our colleagues, taking beautiful souvenir photos. Such activities makes us feel appreciated and brings staff together, both of which help to form deeper relationships between team members and across the organisation.



01



02



The Tidiest Desktop Competition in August

In addition to regular monthly activities such as birthday parties, new activities are also introduced from time to time, such as The Tidiest Desktop Competition in August. The aim of the activity is to make everyone pay attention to the neatness and comfort of their workstations and to create a warm and efficient working environment. During the competition, all of us made our workstations look clean and tidy, and even decorated them in a creative way. The winner of the competition was awarded the best-selling book of the year, which is the kind of spiritual enrichment that POE wants to see!





POE Data Recovery



As a responsible company, we pay attention to every detail of our client's projects.

In early August, we organized an internal company meeting with top management to make work summary in the past few months and discuss what we can improve. As POE has evolved over the years, we have held such meetings every few months to improve ourselves. With the help of the team, we know what additional services we need to provide to our clients, such as more professional expressions for the EQ (engineering questions) and the solutions for the problems our clients encounter in their projects, and a step-by-step plan to prevent future problems from recurring. This is how we have been improving ourselves for 26 years.





Super September

In order to make the whole staff deeply understand the activities, pay attention to the development of the company, better promote the activities and enrich the company's culture, POE's leadership let all departments and teams to participate in the kick-off meeting of the Super September.

On August 26, POE team representatives attended the launch meeting of Super September. POE is united, high spirited, enthusiastic and bound to win in this event.

To this end, we have prepared various discounts and benefits for new and regular customers.

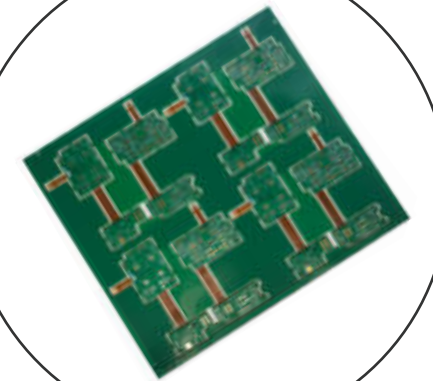
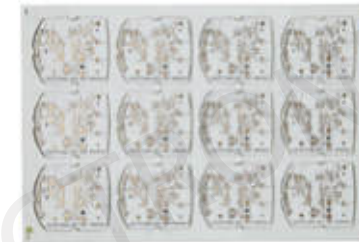
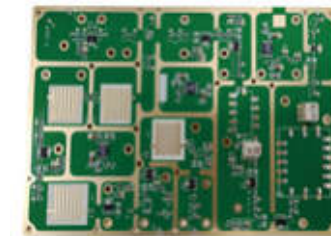
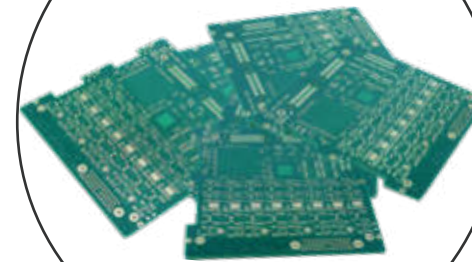
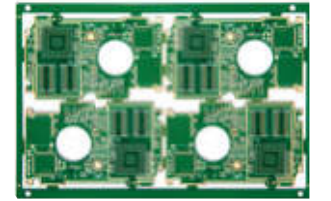
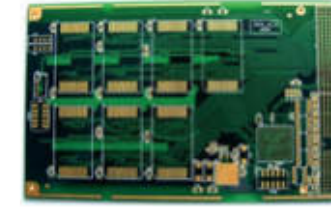
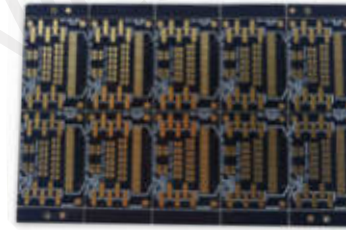
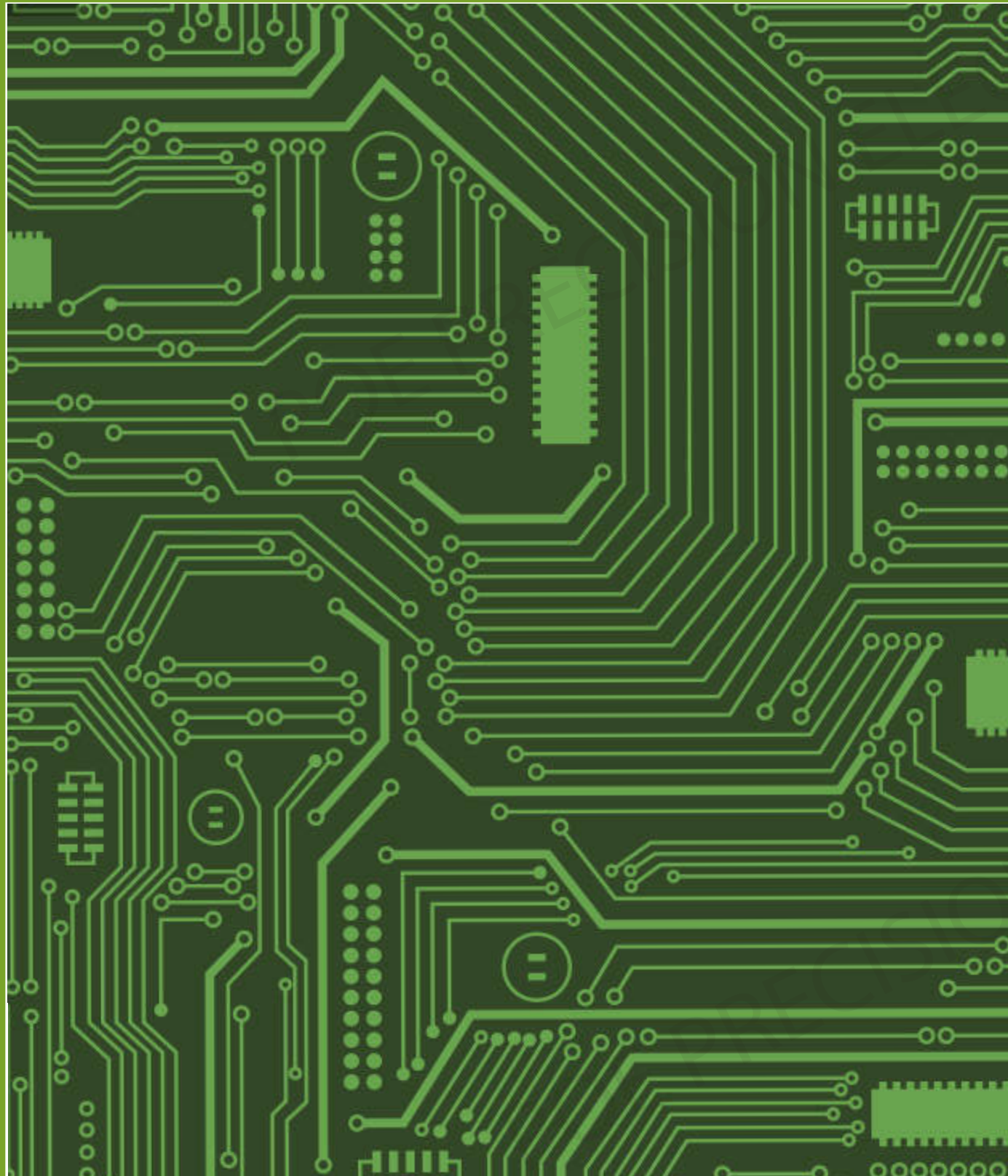
September has begun. Come and join us soon!

The annual Super September began. POE, as a top enterprise with its own strength factory, was invited by to participate in this super procurement activity again.

According to the instructions of the general manager, POE have been preparing for this Super September since mid August.



July-August PCBs Products



PCB EQUIPMENTS SHOW



Drilling Machine



PTH



CNC Outline



LDI

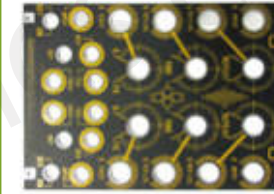


Circuit Etching

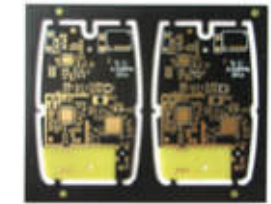


Sink Copper

Multi-layer PCBs



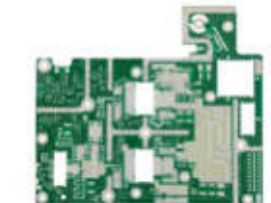
8 Layer, FR4, Immersion Gold
1.6 mm thickness
0.15mm Min hole
1oz copper thickness
Black soldermask
Yellow silkscreen



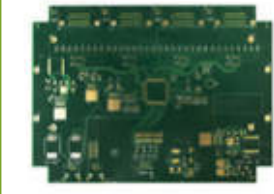
6 Layer, FR4, Immersion Tin
1.6mm thickness
0.15mm Min hole
1oz copper thickness
Black soldermask
White silkscreen
Impedance control



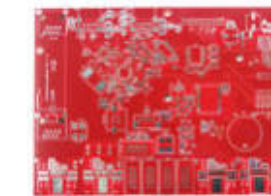
14 Layer, FR4, Immersion Gold
1.6mm thickness
0.15mm Min hole
1oz copper thickness
Green soldermask
White silkscreen



12 Layer, FR4, HASL
1.6mm thickness
0.15mm Min hole
1oz copper thickness
Green soldermask
White silkscreen
Laser drilling+Mechanical Drilling



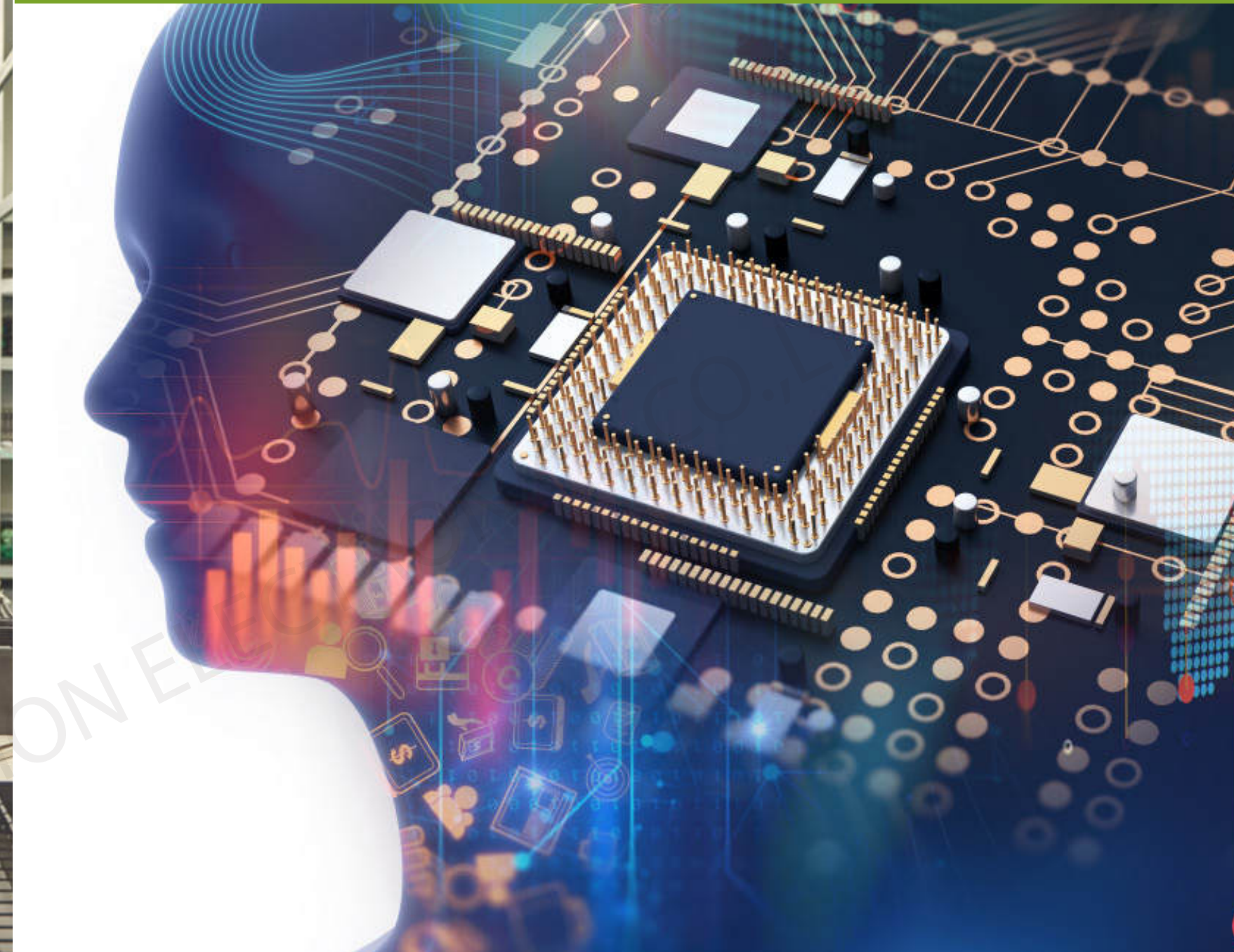
14 Layer, FR4, Immersion Tin
1.6mm thickness
0.15mm Min hole
2oz copper thickness
Green soldermask
White silkscreen



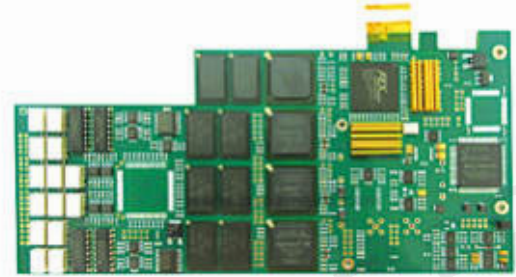
8 Layer, FR4, HASL
1.6mm thickness
0.15mm Min hole
1oz copper thickness
Red soldermask
White silkscreen



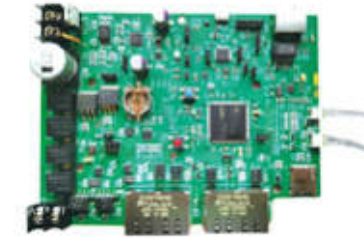
July-August PCBAs Products



16 Layer PCB Assembly
 Material: FR4 TG170
 Finish treatment: ENIG+Gold finger 10u"
 Resin plugging vias
 Min 0.25mm BGA ball



10 Layer PCB Assembly
 Material: FR4 TG150
 Finish treatment: ENIG 2u"
 Copper thickness: 1.5oz
 Board thickness: 1.6mm



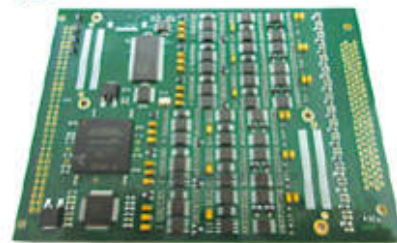
14 Layer PCB Assembly
 Material: FR4
 Finish treatment: HASL lead free
 Copper thickness: 1oz
 PCB Size: 165*120mm



12 Layer PCB Assembly
 Material: FR4 TG150
 Finish treatment: Immersion gold
 Copper thickness: 1oz
 Impedance control

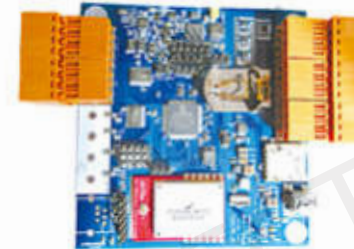


16 Layer PCB Assembly
 Material: FR4
 Finish treatment: HASL lead free
 Copper thickness: 1oz
 PCB Size: 165*120mm

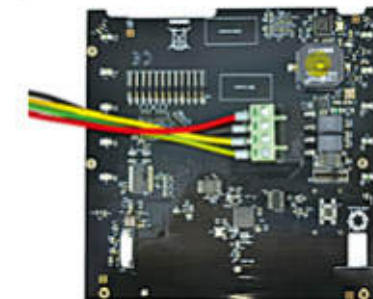


14 Layer PCB Assembly
 Material: FR4 TG170
 Finish treatment: Immersion gold
 Copper thickness: 2oz
 Board thickness: 1.6mm

10 Layer PCB Assembly
 Material: FR4
 Finish treatment: HASL lead free
 Copper thickness: 1oz
 Board thickness: 1.6mm



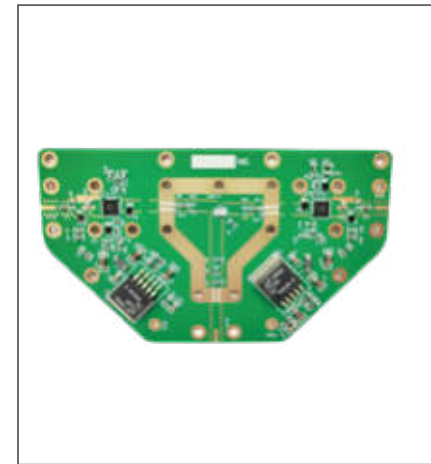
8 Layer PCB Assembly
 Material: FR4 TG150
 Copper thickness: 1oz
 Board thickness: 1.6mm
 Blue solder mask



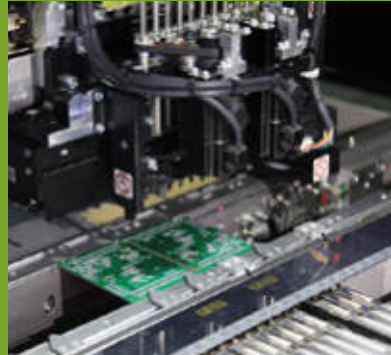
8 Layer PCB Assembly
 Material: FR4
 Finish treatment: HASL lead free
 Copper thickness: 1oz
 Board thickness: 1.6mm



10 Layer PCB Assembly
 Material: FR4
 Finish treatment: HASL lead free
 Copper thickness: 1oz
 Board thickness: 1.0mm



PCBAs EQUIPMENTS SHOW



High speed SMD Machine



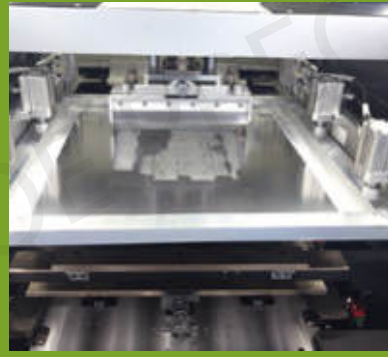
Multifunctional SMD Machine



Manual Visual QC



SPI



Automatic Solder Paste



AOI



Wave Soldering



Reflow Oven



X-RAY



Baking Machine



Automatic PCB Loading



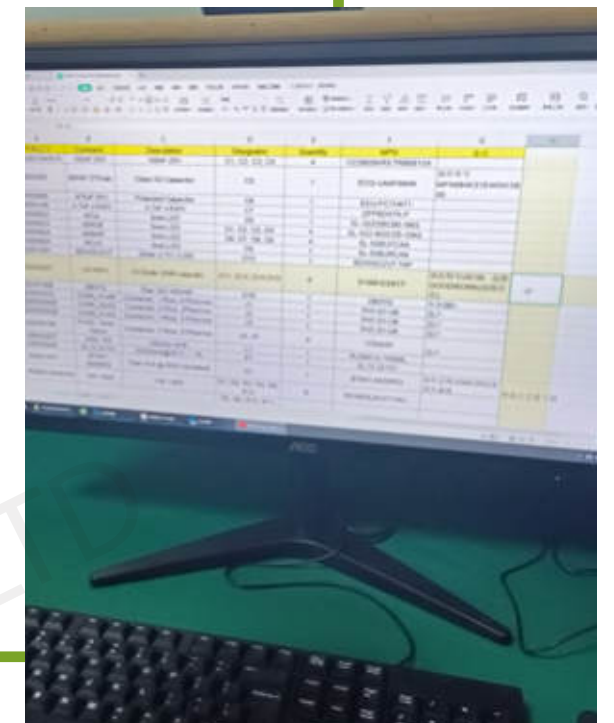
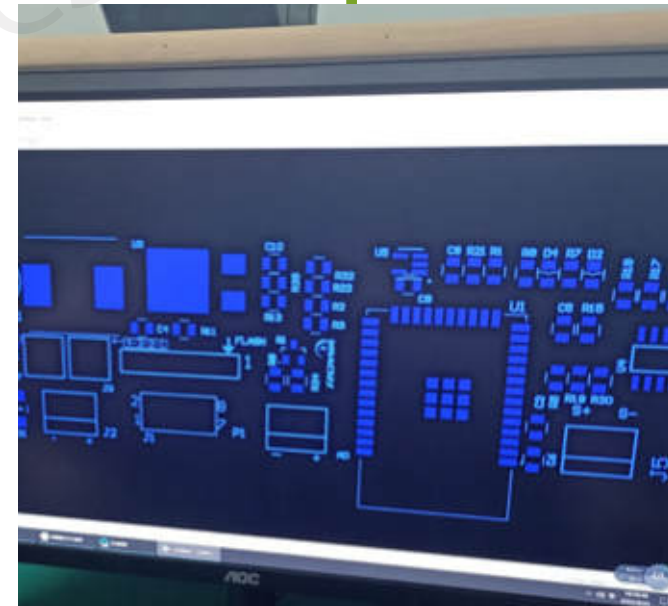
Plate Washer



Quality Control

Certificates Show

1. UL certification.
2. ISO9001: 2015 quality System certification.
3. ISO13485:2016 quality system certification.
4. Manages the processing of fixed products in strict accordance with IPC6012II / military standard / customer standard / enterprise internal standards.
5. Strict customer information confidentiality management system.
6. RoHS.Reach quality system certification.



RoHS

ISO9001: 2015

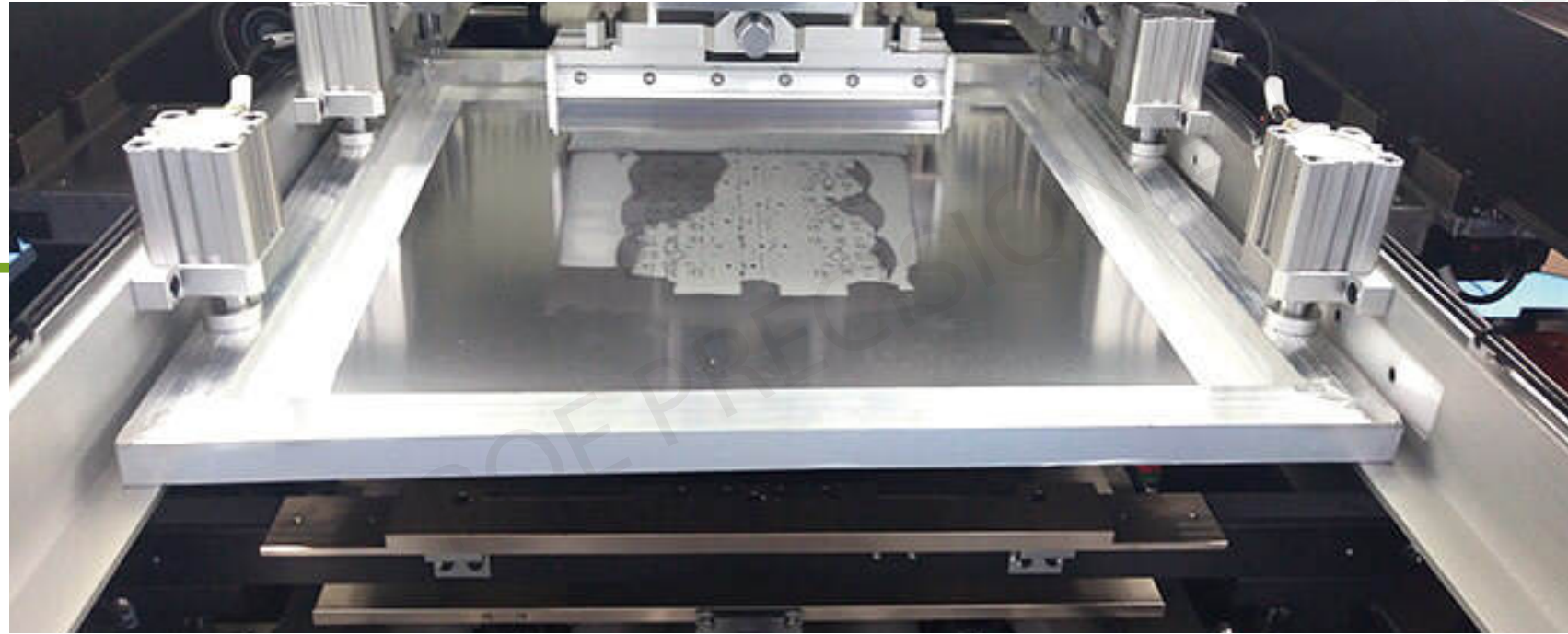
ISO13485: 2016

REACH

UL

BOM+Gerber Review ▶▶▶

As we all know, Gerber files, BOM(bill of materials) and pick and place files are necessary for PCBA assembly. Our experienced team always reviews your BOM and circuit board Gerber files prior to production. We generally review the BOM to look for any discrepancies such as duplicate part numbers, mismatches between part numbers and description, and incomplete part numbers. We will communicate any BOM issues to you directly if we do find some mistakes that occurred in the design process.



Automatic SMT Production Line



SMT production line have fully automated processes.

The first step for the SMT production is automatic board loader, we put the PCB board in the Loader, and then the PCB will be transferred to the stencil printing machine for solder paste printing, and enter solder paste inspection machine to guarantee the printing quality, and then enter the pick and place machine to place components of different sizes on the PCB, and then enter the reflow oven for high-temperature soldering.



Visual Inspection

The simplest form of PCBA inspection is manual visual inspection. Our technicians will compare the board to the Gerber files to ensure that all specifications were met. It can be useful to perform a manual visual inspection after nearly every step in the assembly process.



FAI

First Article Inspection is mainly to find out the factors affecting the quality of the product in the production process as early as possible, and prevent the product from being out of tolerance, repair and scrap. Through the FAI, systemic reasons such as BGA welding quality, measuring instrument accuracy, drawings, etc. can be found, so that corrective or improvement measures can be taken to prevent batch non-conforming products from occurring.



AOI

Automatic optical Inspection (AOI) is to obtain the image of the device or PCB through CCD photography, and then through the computer processing and analysis and comparison to determine defects and faults. The advantage is that the detection speed is fast, the programming time is short, and it can be placed in different positions in the production line, so that the faults and defects can be timely and the production and detection are combined into one.



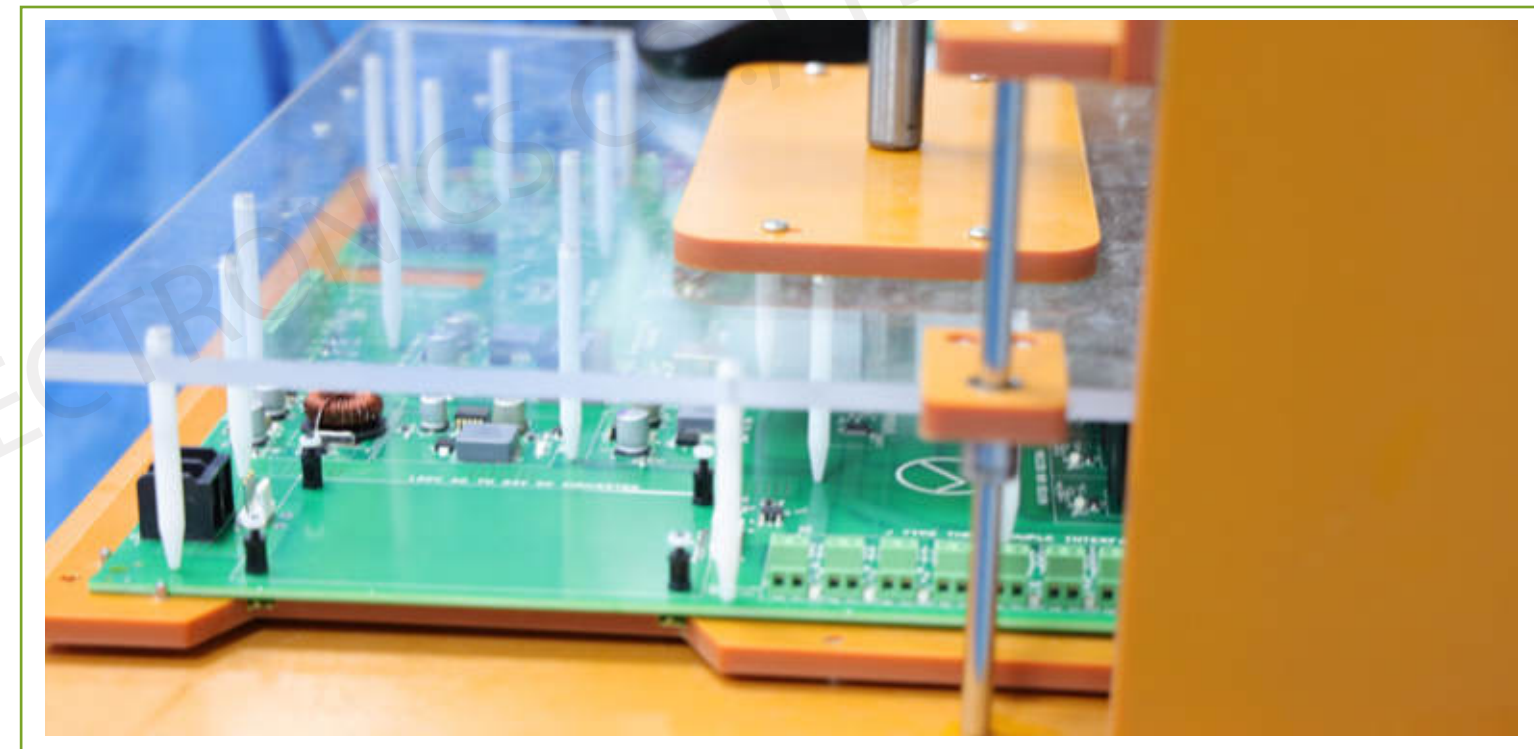
X-RAY

X-ray inspection technology, usually referred to as automated X-ray inspection, is a technology used to inspect the hidden features of target objects or products with X-rays as its source. Nowadays, X-ray inspection is widely used in lots of applications such as medical, industrial control, and aerospace. As for PCB inspection, X-ray is massively used in the process of PCB assembly in order to test the quality of PCBs, which is one of the most important steps for quality-oriented PCB manufacturers.



Programming / Testing

Is your product functionally fit for release? This question depends on how customer-focused you are. Without consistently delivering a compelling experience, brands or enterprises cannot boost customer satisfaction. Programming loading and functional testing services validate that an application performs as per with the desired functionality specifications and competently meets the end-user expectations. Our functional testing solutions aid our clients in increasing their client base, enjoying greater ROI and gaining a better market standing.



The Work Environment



POE factory is kept clean, no dust, no corrosive gas. Production workshops should have cleanliness control.

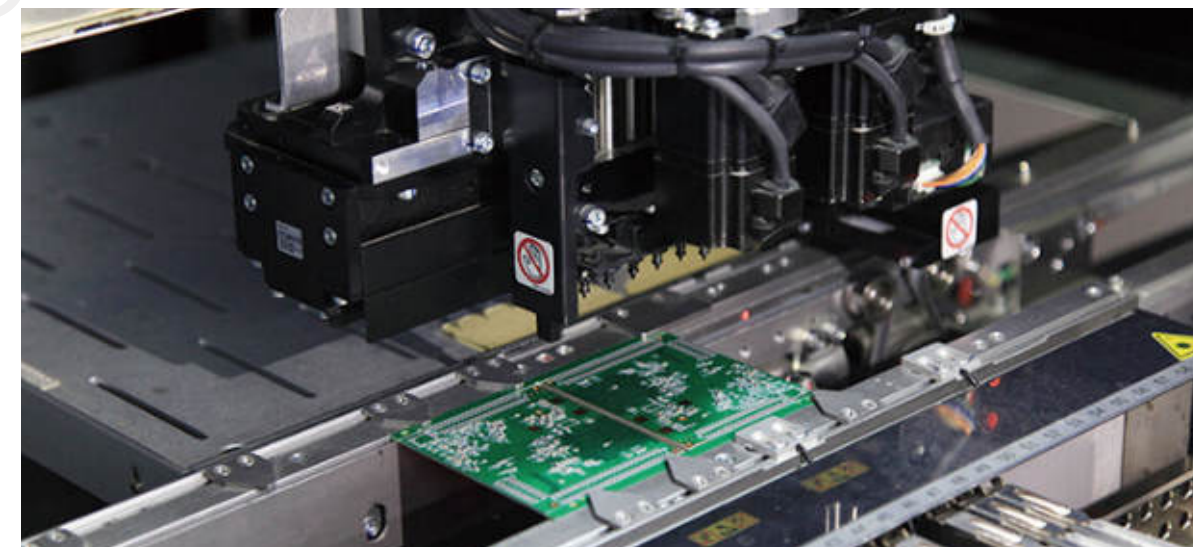
Production workshop environment temperature to 23 ± 3 °C is the best, average of $17 \sim 28$ °C, relative humidity is 45% ~ 45% RH.

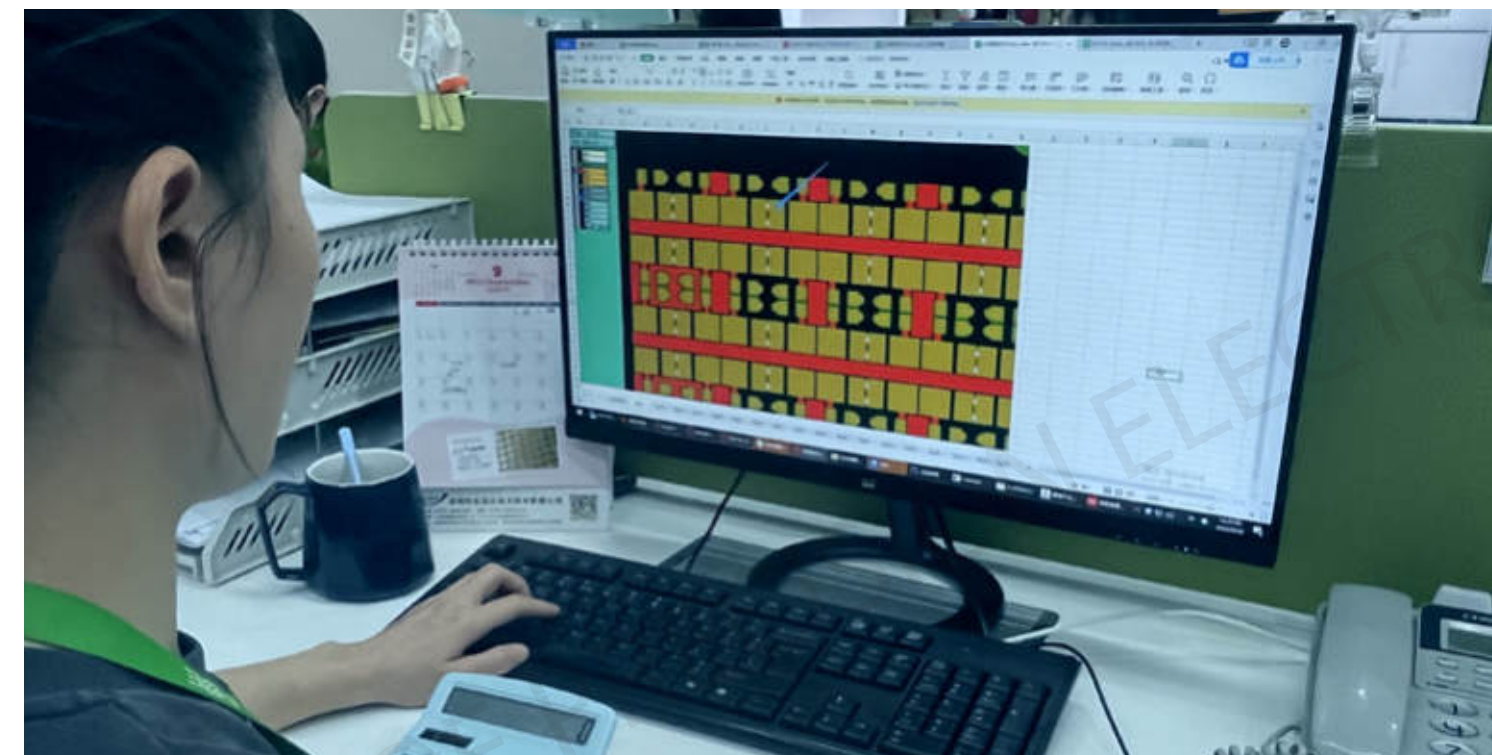
Workshop bearing capacity, vibration, noise requirements

Factory ground bearing capacity should be greater than 8kg/m².

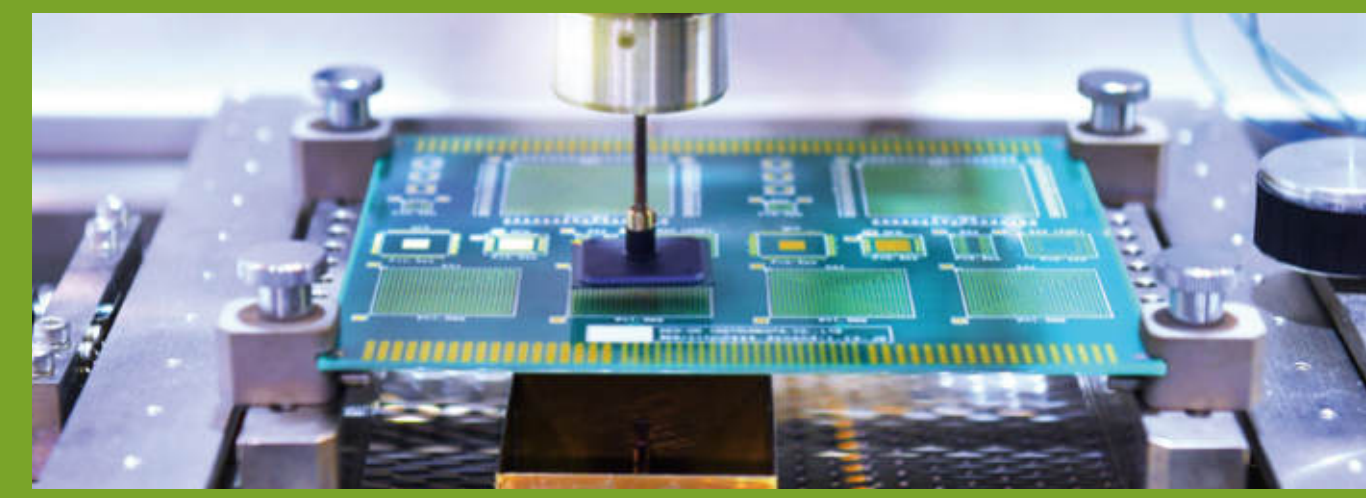
Vibration should be controlled at less than 70 dB, with a maximum value of no more than 80db.

The noise should be controlled within 70 dB.





ESD protection: Some components are electrostatic sensitive, so they must be well protected from electrostatic. There are some methods to reduce the electrostatic, like connecting the equipment to ground or other conductor substances by wires, and building anti-static material on the floor.



Power supply

General requirements of single-phase AC220 (220 + / - 10%, 0/60 Hz), three-phase AC380 (380 + / - 10%, 50/60 Hz). The power of electricity supply should be more than double the power consumption.



Air

According to the requirement of the equipment configuration of air pressure, it can be plant air, and also configured individually oil-free compressed air machine, the general pressure is greater than 7 kg/cm².



Exhaust

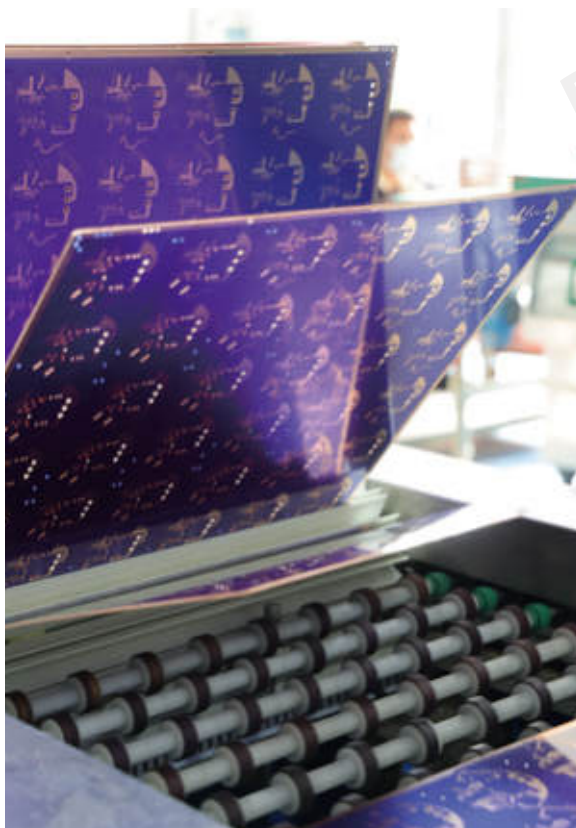
Reflow soldering and wave soldering equipment need an exhaust fan. For a hot blast stove, the exhaust pipe of the minimum flow rate value is 500 cubic feet per minute (14.15 m³ / min).



Lighting

In the ideal plant illumination is 800 ~ 1200 lux, at least not less than 300 lux, when low intensity of illumination, in the inspection, repair, and measurement work areas should install local lighting.

Environmental impact has long been a challenging issue for the printed circuit board industry. POE is a historically strong proponent of sustainable manufacturing, everyone in POE is aware of this importance and strictly follows the ISO14000 environmental management system. POE will continue to cooperate with all our material suppliers who may be affected by the new ROHS compliance regulations. Every kind of raw material, from copper clad laminate, solder mask, electroplating and all processes, surface treatments, (OSP, HASL (lead-free), ENIG, etc...), all of them are RoHS compliant.



Employee health and safety are the foundation of the corporate culture at POE. We promote the values of people-oriented and safety first and encourage employees to regard their own health and safety.



The workshop is the core of the PCB factory and the "home" we rely on. Regular training in the workshop environment and personnel requirements are indispensable and important links.



POE adheres to clean production in accordance with the environmental management system and pays attention to the environment and safety control in the production process and the labor protection of employees. We rigorously implement relevant laws and strictly including the "Safe Production Law," the "Fire Prevention Law of PRC", and the "Code of Occupational Disease Prevention", to establish safe production responsibilities at every level.